

EMERGENCIES

The Fire, Security and Medical teams are present 24hrs a day whilst the campsite is open. They are there for the safety and well-being of all campers. Please respect any instructions given by them. Any campers found to be acting irresponsibly may be evicted from the campsite without refund of ticket fees.

MEDICAL Call 07974 047929
FIRE/SECURITY EMERGENCY Call 07919 218148

Valuables and Security

Please be vigilant against theft. Personal items and valuables are left at your own risk. MSV accept no responsibility for loss or damage sustained to these items.

Food and Drink

Alongside a number of food and drink outlets operating at the venue during the event, the Kentagon and Hailwoods bar and restaurants will be open into the evening from Friday through to Sunday, serving evening meals until 21:00 and drinks until midnight. Light snacks will still be available after 21:00.

There is no shop on site for purchasing self catering supplies but the nearest store is less than 5 minutes drive from the campsite. The Co-Op in Hever Road can be accessed by exiting the campsite and heading south on the A20 towards West Kingsdown. Hever Road is located on the left just past the Texaco garage.

Waste & litter

Please make use of the rubbish bags provided and, when full, dispose in the waste bins located around the campsite. More bags are available from the campsite entrance booth.

Evening Entertainment

Our evening schedule will keep you entertained into the night! Join us at the Kentagon Disco on Saturday night with DJs playing the latest chart toppers mixed with classic floor fillers.

Items not allowed in the campsite

For everyone's safety and enjoyment, the following are prohibited:

- Fireworks
- Fires/Firewood/Chimineas
- Chinese lanterns
- Scooters/mini-motos/any vehicle not registered for the road
- Drones
- Laser pens

Any such items will be confiscated by the campsite security team.



Safety

- Fires are not permitted in the campsite (no wood burning)
- Barbecues are permitted to cook food, but must be raised off the ground. Please dispose of coals and single-use barbecues (once cool) in the metal bins provided
- Never leave a hot stove or barbecue unattended
- Keep roadways and fire lanes CLEAR at all times
- Store fuel and generators away from ignition sources.
- Fire extinguishers are located at various FIRE POINTS around the campsite. Use only in an emergency and RAISE the alarm immediately
- Campsite speed limit is 10mph. Only drive if strictly necessary and watch for CHILDREN
- SECURE tents and gazebos carefully – expect high winds!
- No laser pens

Carbon Monoxide (CO) Gas Can Kill!

- It's an odourless gas and does not smell
- NEVER use a portable barbecue or gas burner INSIDE a tent, awning or enclosed space (for cooking, or heating when cold)
- A COOLING barbecue can also give off poisonous gas!
- Never run a generator inside a tent, awning or confined space
- Consider purchasing a Carbon Monoxide alarm and use it inside your caravan or motorhome if running an installed gas appliance – but don't rely on it!

Safe Gas Cylinder Storage and Use

- Always CHECK your cylinder for damage before using
- Maintain good ventilation when using portable gas (remember to use it outside only)
- Always store in an UPRIGHT position
- If a cylinder falls over, check it, stand it up and leave it to settle before connecting it
- NEVER smoke near any gas cylinders and keep all ignition sources away
- Always use manufacturer hoses, connectors and follow their guidance
- If you use a gas appliance, SERVICE IT REGULARLY by an authorised technician from the Gas Safe Register (minimum annually)



NEVER INSIDE



CHECK BEFORE USE



CAMPING INFORMATION

BRANDS HATCH

Welcome to Brands Hatch. We hope you have a very enjoyable time this weekend. Please take a moment to read the following rules for our campsite.

Opening and departure times

The campsite opens at midday on the day before the event, and closes at midday on the day after the event has finished. Please note - facilities will be provided in full during this time.



Directions

Please follow the square symbol on the highway signage for the campsite. The campsite is accessed via the Brands Hatch Main Entrance off the A20.

Noise

Please keep noise to a minimum after 23.30. Any campers that persist in making excessive noise after this time may be evicted from the campsite without refund of ticket fees.

Private vehicles on campsite

Road-registered vehicles are permitted within the campsites, but scooters and mini-motos are not permitted. Please be considerate of others and keep vehicle movement to a minimum. No drinking and driving. Sleeping in vans is not advised, but not prohibited.

Age restrictions

Campers under the age of 16 years must be accompanied by an appropriate adult.

Animals

Strictly no animals are allowed on site at any time. Assistance dogs are permitted when pre-arranged with the venue.



Please report any problems or emergencies to a member of staff

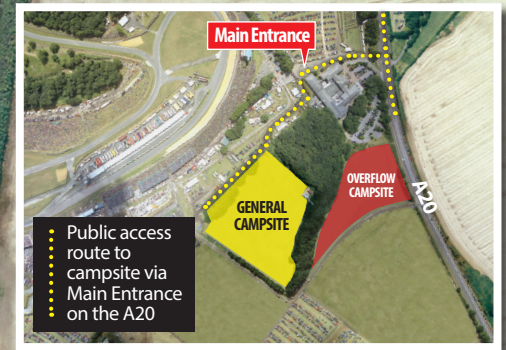
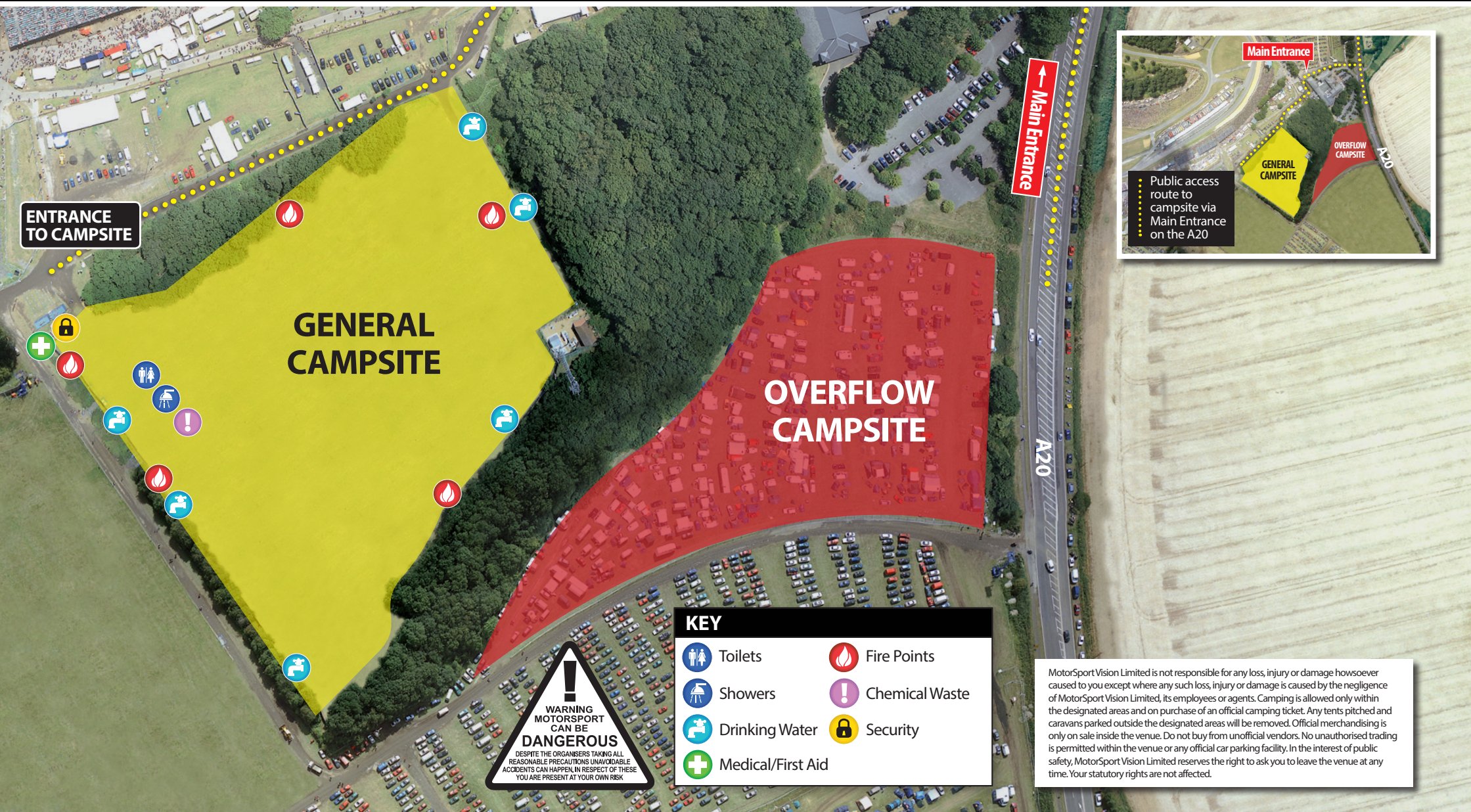
Medical Emergency Call 07974 047929
Fire/Security Emergency Call 07919 218148

0343 453 9000
www.brandshatch.co.uk

Brands Hatch

CAMPSITE MAP

Medical Emergency Call 07974 047929
 Fire/Security Emergency Call 07919 218148



ENTRANCE TO CAMPSITE

GENERAL CAMPSITE

OVERFLOW CAMPSITE

Main Entrance

A20

KEY

	Toilets		Fire Points
	Showers		Chemical Waste
	Drinking Water		Security
	Medical/First Aid		

WARNING
 MOTORSPORT CAN BE
DANGEROUS
 DESPITE THE ORGANISERS TAKING ALL
 REASONABLE PRECAUTIONS UNAVOIDABLE
 ACCIDENTS CAN HAPPEN IN RESPECT OF THESE
 YOU ARE PRESENT AT YOUR OWN RISK

MotorSport Vision Limited is not responsible for any loss, injury or damage howsoever caused to you except where any such loss, injury or damage is caused by the negligence of MotorSport Vision Limited, its employees or agents. Camping is allowed only within the designated areas and on purchase of an official camping ticket. Any tents pitched and caravans parked outside the designated areas will be removed. Official merchandising is only on sale inside the venue. Do not buy from unofficial vendors. No unauthorised trading is permitted within the venue or any official car parking facility. In the interest of public safety, MotorSport Vision Limited reserves the right to ask you to leave the venue at any time. Your statutory rights are not affected.

Please report any problems or emergencies to a member of staff

Medical Emergency Call 07974 047929
 Fire/Security Emergency Call 07919 218148

0343 453 9000
www.brandshatch.co.uk

BrandsHatch